



SIMPLY HOMES

Goldings

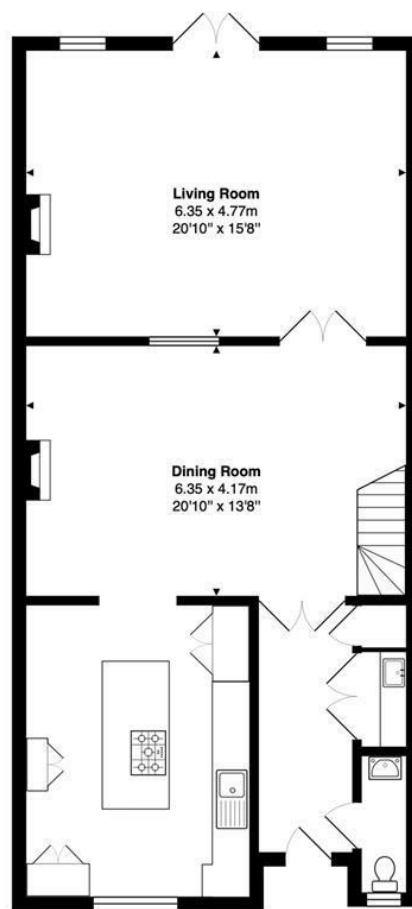
Hertford SG14 2WU



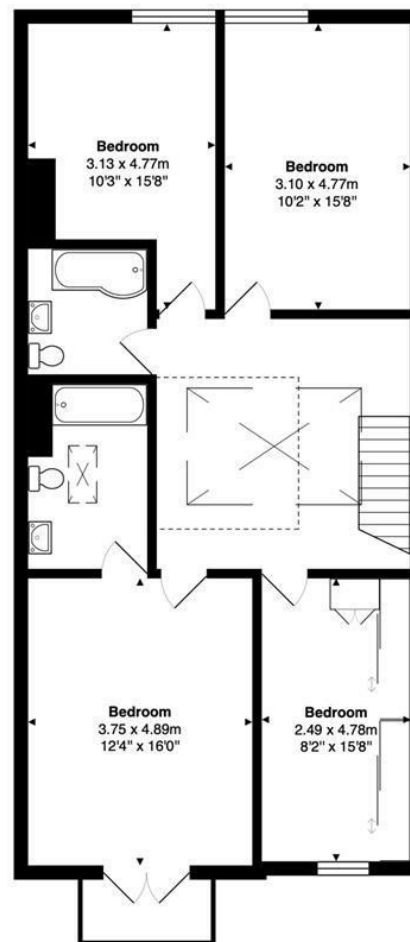
# Goldings

Hertford SG14 2WU





**Ground Floor**  
Area: 88.3 m<sup>2</sup> ... 950 ft<sup>2</sup>



**First Floor**  
Area: 89.2 m<sup>2</sup> ... 960 ft<sup>2</sup>

Total Area: 178.0 m<sup>2</sup> ... 1916 ft<sup>2</sup>

FOR ILLUSTRATIVE PURPOSES ONLY. NOT TO SCALE

Whilst every attempt has been made to ensure the accuracy of the floor plan shown, all measurements, positioning, fixtures, features, fittings and any other data shown are an approximate interpretation for illustrative purposes only and are not to scale. No responsibility is taken for any error, omission, miss-statement or use of data shown.

Property marketing provided by [www.matthewkyle.co.uk](http://www.matthewkyle.co.uk)



SIMPLY HOMES

115 Fore Street | Hertford | SG14 1AS | 01992 558 557 | sales@simply-homes.co.uk | simply-homes.co.uk | Find us on

